

# HPS

Hygienic Plastic Supplies Ltd

## THE *COMPLETE* DECOR COLLECTION

Quality you can trust



01282 788310

[info@hygienicplastic.co.uk](mailto:info@hygienicplastic.co.uk)

[www.hygienicplastic.co.uk](http://www.hygienicplastic.co.uk)





# ABOUT HYGIENIC PLASTIC SUPPLIES LTD

We are a second generation family run business who have been providing first class quality plastic components across the UK for over 25 years. Supported by some of the worlds leading manufacturers, customers receive the best service and product satisfaction beyond any competitor.



## Our journey began over 30 years ago

Hygienic Plastic Supplies took inspiration from Philip Booker and his company Pureclad.

He was one of the first to discover the benefits of hygienic wall cladding over 30 years ago and took the opportunity to fit and supply.

With industries such as farming, food, meat preparation, retail and healthcare realising how beneficial these materials were, Pureclad soon flourished and has continued to do so up to the present day.

Philip's children, Jonathan and Charlotte took inspiration from his success and as such Hygienic Plastic Supplies Ltd was established.

## Our mission

Our mission is pretty straight forward - we are here to offer a wide range of PVC based products and flooring for both commercial and retail customers. With a substantial stock held across the north west, we always strive to meet our customers needs. Importantly, our products are fully compliant with all food, hygiene and fire regulations and we're proud to be backed by some of the world's leading manufacturers.

## Our vision

Our focus is to continue to support and grow our customers while maintaining the friendly and personal service that we are known for.

We aim to be the 'go to' supplier within the industry and to offer our customers a diverse range of supplies while always preserving a happy work environment for our team members.



**Our clients** - We supply some of the biggest brands in the UK.





# CONTENTS

Welcome to our decor products, a range of wall, ceiling and flooring solutions to enhance the interior of your home or business. There is a style to suit every taste. **All our products are backed with a 20 year guarantee** and comply with all food, hygienic and fire regulations.

Please ask our friendly service team if you have any enquiries.

**01282 788310**   [info@hygienicplastic.co.uk](mailto:info@hygienicplastic.co.uk)



**LARGE BATHROOM PANELS**  
Page 2



**WALL & CEILING PANELS**  
Page 5



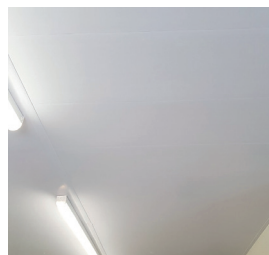
**SOLID WALL PANELLING**  
Page 17



**SLAT WALL PANELLING**  
Page 26



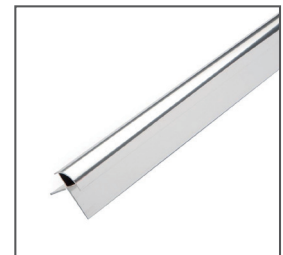
**FLOORING**  
Page 29



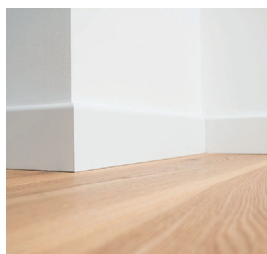
**PVC CEILING PANELS**  
Page 39



**HYGIENIC WALL CLADDING**  
Page 41



**FITTINGS & ACCESSORIES**  
Page 43



**SKIRTING & ARCHITRAVE**  
Page 46



**ADHESIVES & SEALANTS**  
Page 47





# BATHROOM CLADDING & SHOWER PANELS

Our large range of PVC bathroom and shower cladding are a cost-effective and practical alternative to tiling for your home or commercial premises. They do not require grouting, require minimal maintenance, and feature easy-clean, wipe-free surfaces to keep their look along with water repellent properties. Ideal for bathrooms, showers and wet room applications. All of our products come with a 20 year guarantee.

## Quick & Easy Installation

On average it is at least 50% faster and cheaper to install our wall and ceiling panels than it is traditional tiles, and our panels do not require specialist fitting as there is no need for grouting.

If walls are dry, clean and flat, then very little preparation is required before installation. Our panels can even be installed over existing tiles.

Trims and corners are available to compliment the range, completing the look and providing a professional finish.



# Large Bathroom & Shower Panels

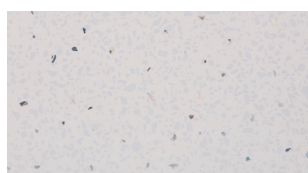
(2400 x 1000 x 10mm)



**"Fantastic company,  
could not have been  
more helpful- thank you.  
Best price I could find,  
next day delivery, great  
customer service."**

Featuring a flush style tongue and groove fitting and designed to work with the most popular of shower trays. Our shower panels are the ultimate combination of beauty and convenience. They are suitable for all areas of your home.





White Sparkle



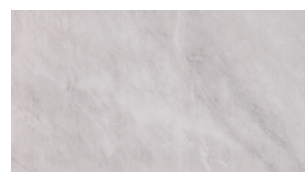
Grey Sparkle



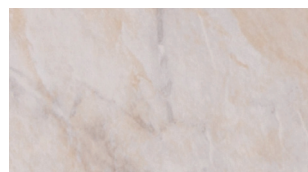
Black Sparkle



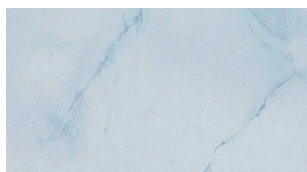
Black Marble



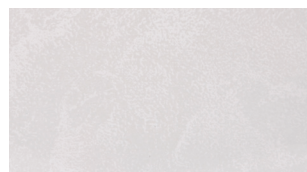
Grey Marble



Pergamon Marble



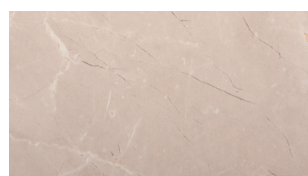
Blue Marble



Frosty White



Travertine



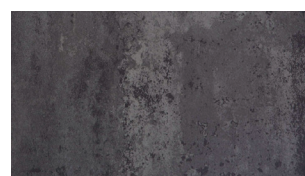
Matt Beige Stone



Polished Stone



White Gloss



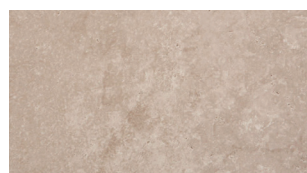
Retro Metallic



Silver Pearl



Grey Concrete



Beige Concrete



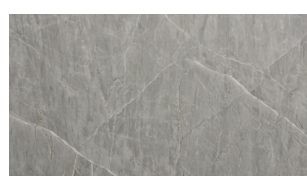
Matt Carraraa Marble



Matt Stripes Dark Grey



Matt Stripes Light Grey



Pietra Grey

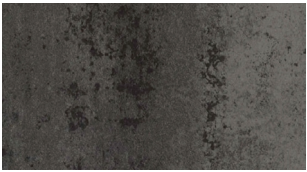


Bardiglio Marble

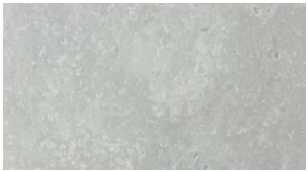


# Large Bathroom & Shower Panels

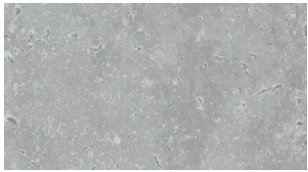
(2400 x 900 x 10mm)



Metallic Stone



Matt White Stone



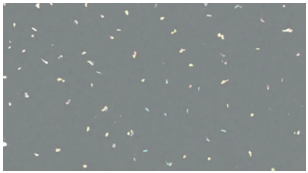
Matt Misty Stone



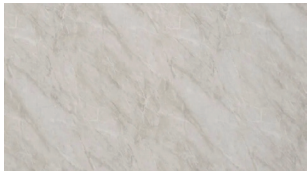
Gloss Fusion Light Grey



Gloss White Sparkle



Gloss Grey Sparkle



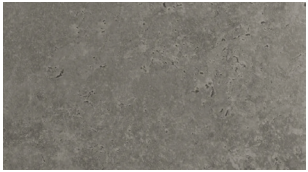
Gloss Grey Marble



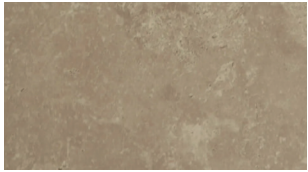
Gloss Beige Marble



Gloss White



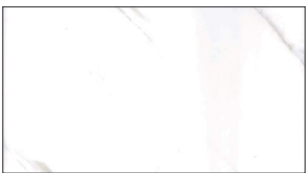
Matt Grey Stone



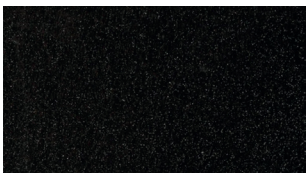
Matt Beige Stone



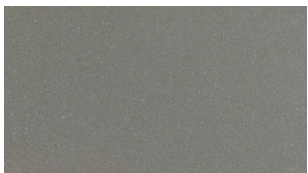
Matt Slate Grey



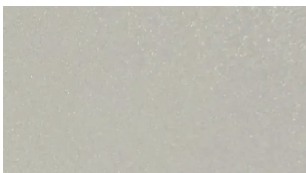
Gloss Carrera



Gloss Galaxy Black



Gloss Galaxy Grey



Gloss Galaxy White

# WALL & CEILING PANELS

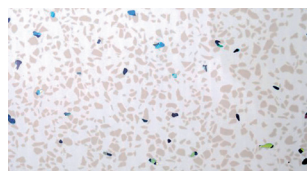
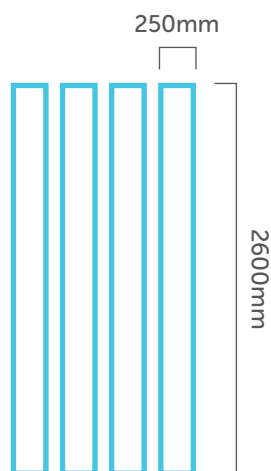


We stock a large range of beautiful decorative wall cladding and ceiling panels for bathrooms, showers, kitchens and conservatories. Ideal for use in any area of your home, all our panels have 'tongue and groove' joints for the perfect waterproof fit.



# Wall & Ceiling Panels

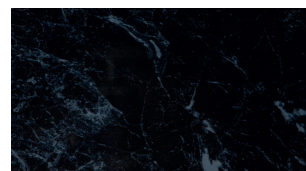
(2600 x 250 x 7.5mm) Pack of 4



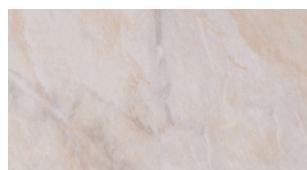
White Sparkle



Black Sparkle



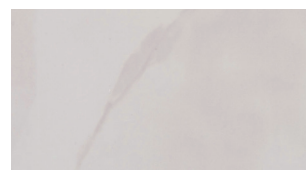
Black Marble



Pergamon Marble



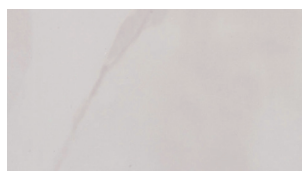
Venetian marble



Beige Marble



Blue Marble



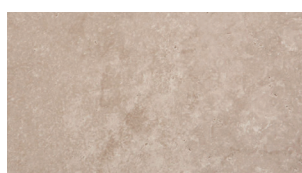
Grey Marble



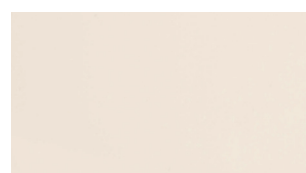
White Ash



Grey Concrete



Beige Concrete



Cream Gloss



White Gloss

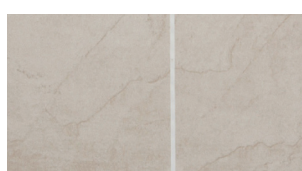


White Chrome

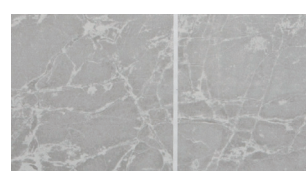


White Matt

New tile effect designs with simulated grout lines, 250mm wide by 2.7m in length and 8mm thick, supplied in packs of 4.



Beige Grout Line



Grey Grout Line

# Wall & Ceiling Panels



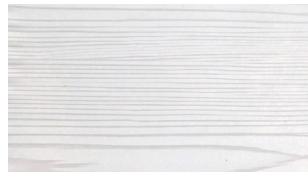
"Great product  
great staff."



## (4000 x 250 x 7.5mm) Pack of 4



Ceiling Clad



White Ash



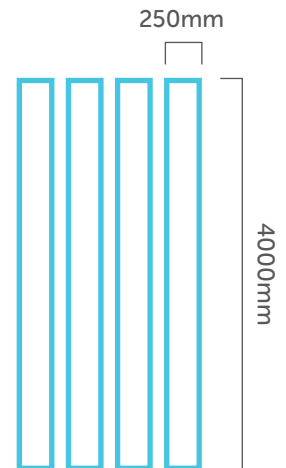
White Gloss



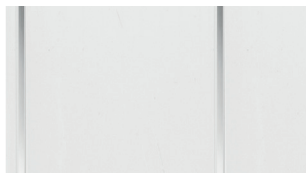
White Matt



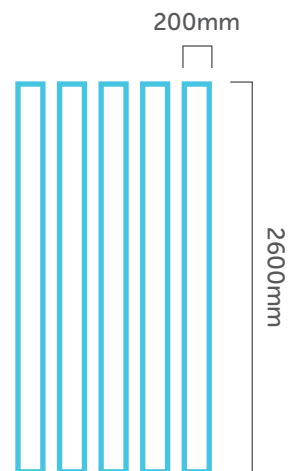
White Chrome



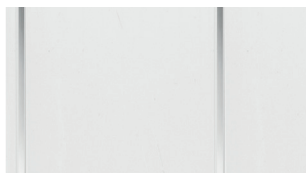
## (2600 x 200 x 7.5mm) Pack of 5



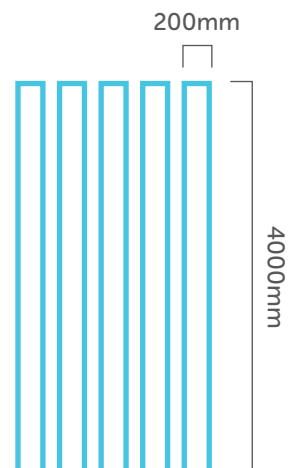
Moderna White & Silver



## (4000 x 200 x 7.5mm) Pack of 5



Moderna White & Silver





# Wall & Ceiling Panels

(2700 x 250 x 8mm)



"Used this place twice now and definitely going back for more panels, really helpful, friendly, and definitely a 5 star."



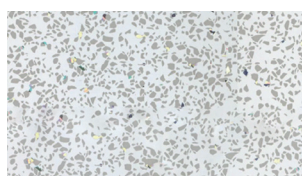
250mm



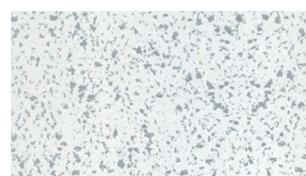
2700mm



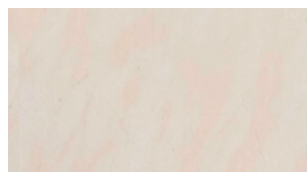
Grey Fleck



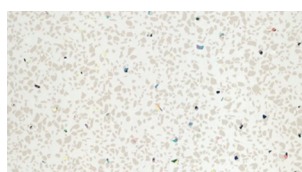
White Sparkle



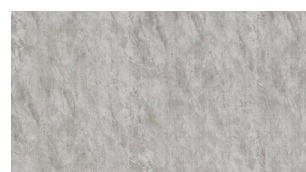
Platinum Sparkle



Beige Marble



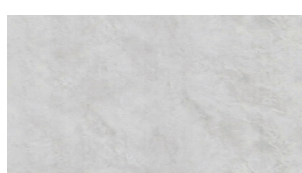
Beige Sparkle



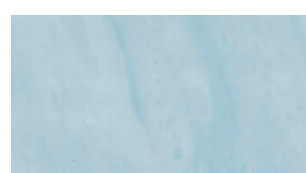
Storm Grey



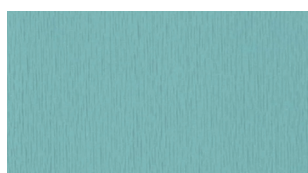
Silver birch



Palermo



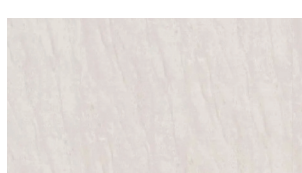
Aquarius



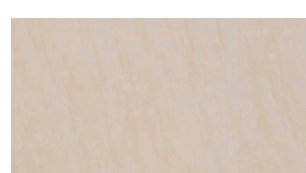
Aqua Shimmer



White Shimmer



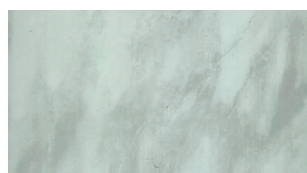
Arctic Grey



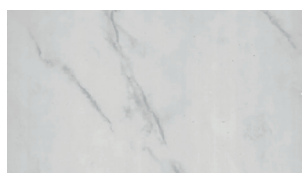
Sandstone



Rose Marble



Green Marble



Grey Marble





# Wall & Ceiling Panels

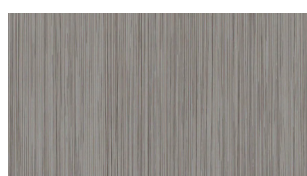
(2700 x 300 x 8mm)



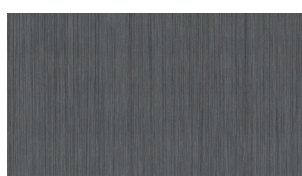
300mm



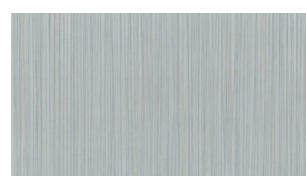
2700mm



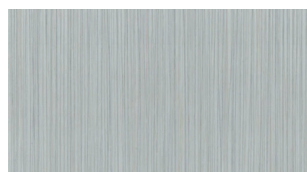
Light Abstract



Dark Abstract



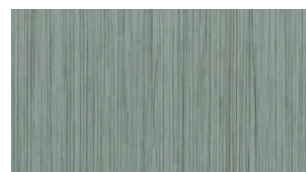
Platinum Abstract



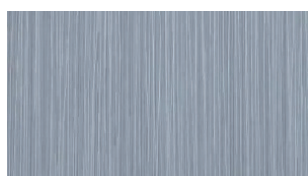
Silver Abstract



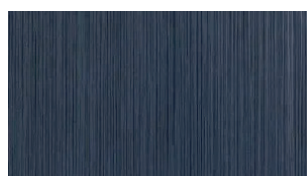
Pink Abstract



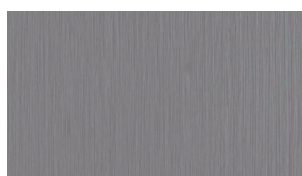
Sage Abstract



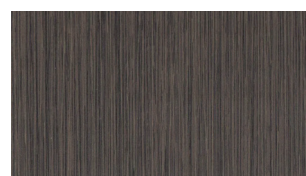
Soft Blue Abstract



Dark Blue Abstract



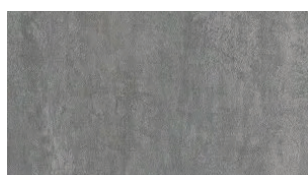
Grey Abstract



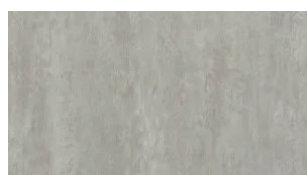
Brown Abstract



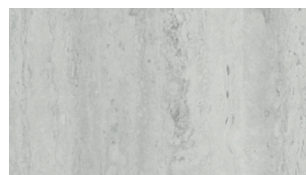
**"Great team with great service. Very friendly and honest guys."**



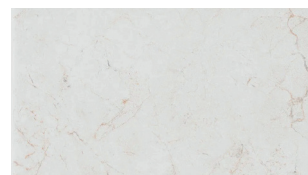
Magnetite



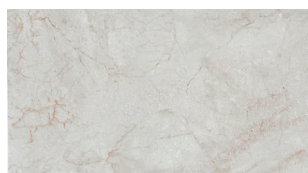
Gypsum



Quarried Grey



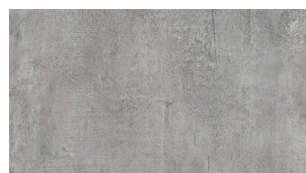
Fantasia



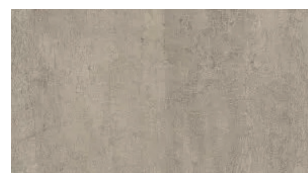
Java



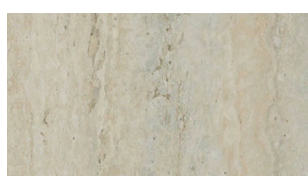
Calcite



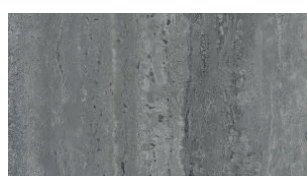
Imperial Grey



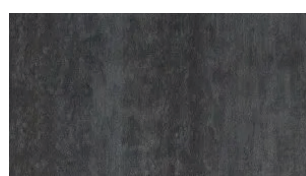
Imperial Buff



Quarried Beige



Quarried Charcoal



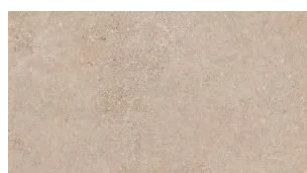
Chromite



Black Granite



Grey Granite



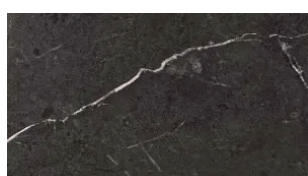
Beige Granite



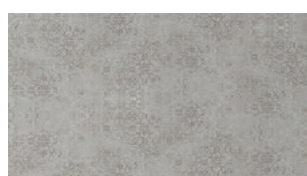
Castello



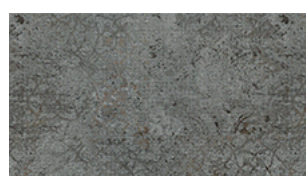
Pacific



Marquina



Gilted Silver



Gilted Bronze



# Wall & Ceiling Panels

(2700 x 500 x 8mm)



Cleveland



Cumbria



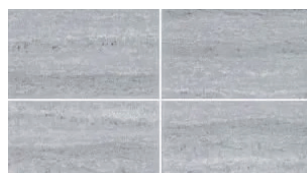
Devon



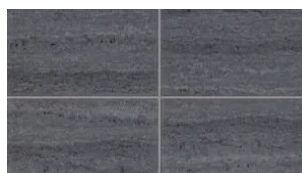
Yorkshire



Durham



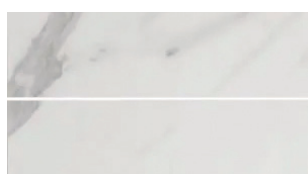
Angus



Gwent



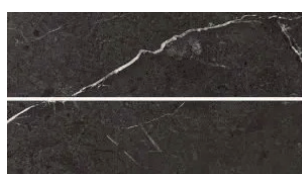
Somerset



Shropshire



Wiltshire



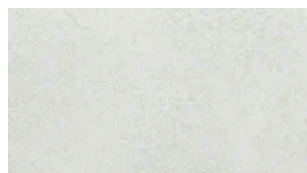
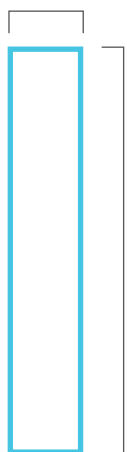
Stirling



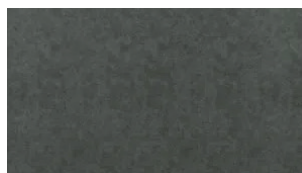
Armagh



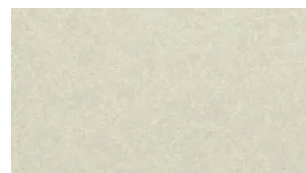
500mm



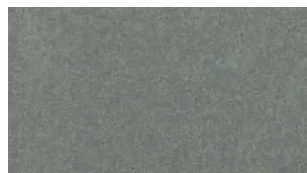
Formia Smooth



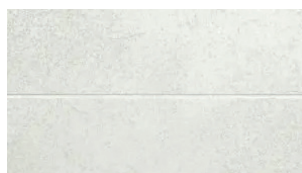
Biella Smooth



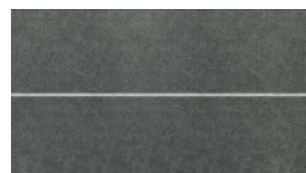
Aversa Smooth



Ancona Smooth



Formia Tile



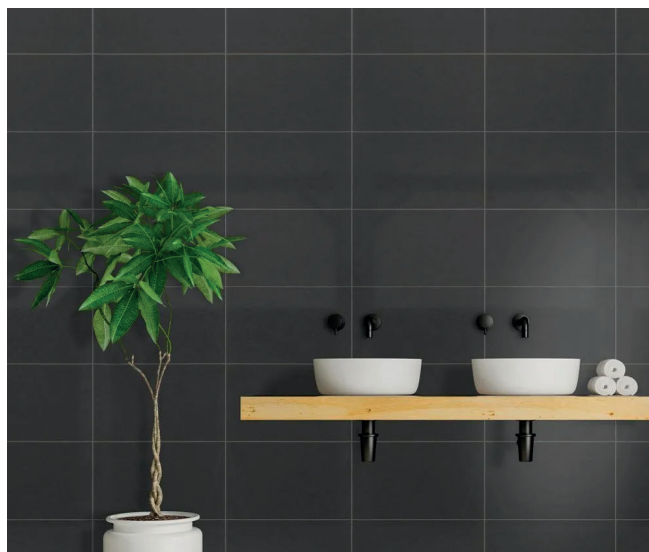
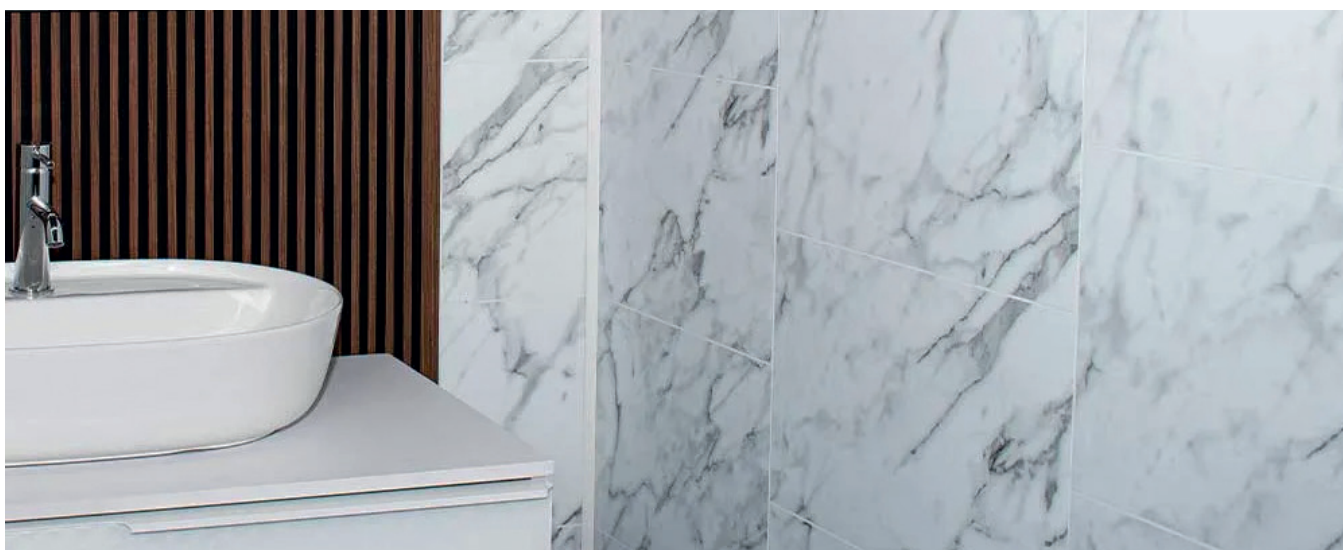
Biella Tile



Aversa Tile



Ancona Tile



# Wall & Ceiling Panels

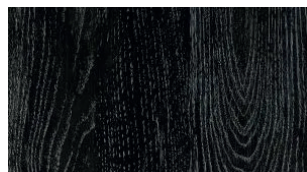
(2700 x 300 x 8mm)

"Cannot recommend this company highly enough. Great product, great price. Will be using for all our future requirements."

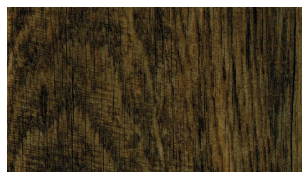
300mm



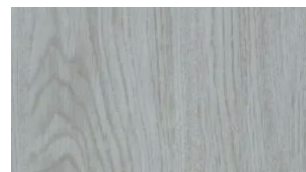
2700mm



Black Silver Oak



Dark French Oak



Chalked Oak





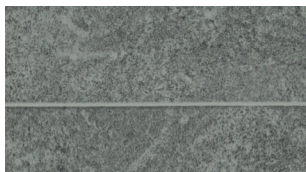
300mm



2700mm



Topaz



Shale



Dolomite



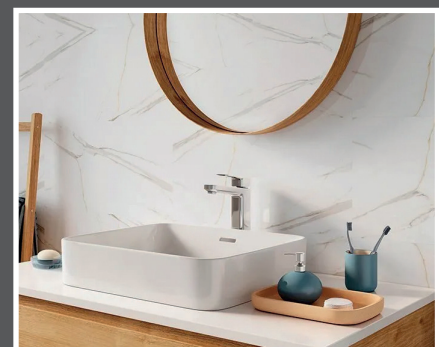


# SOLID WALL PANELLING



Our Solid Wall Panelling has been developed to satisfy the needs of customers who require a hard wearing and durable solution that's as stylish as it is tough.

"Super impressed  
with the service  
and products  
received"

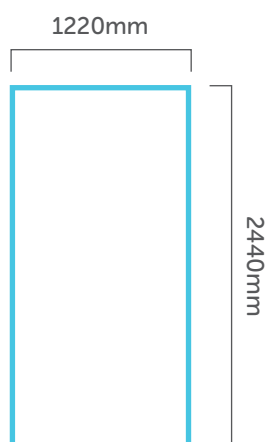




# Atlantis Solid Panel Range

(2440 x 1220 x 3mm)

Our Atlantis range is a 3mm thick solid laminated, bevel embossed tile effect waterproof panel with crisp, clean grout lines and are designed to withstand the toughest conditions.



High Gloss White



High Gloss Black



High Gloss Graphite Metallic



High Gloss Grey

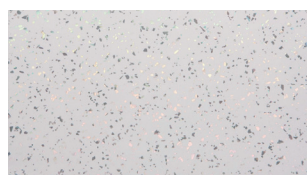
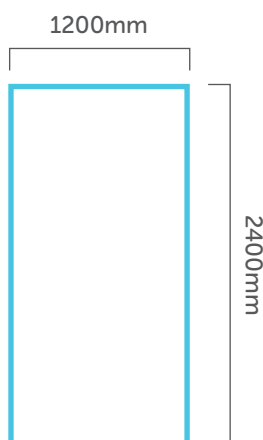
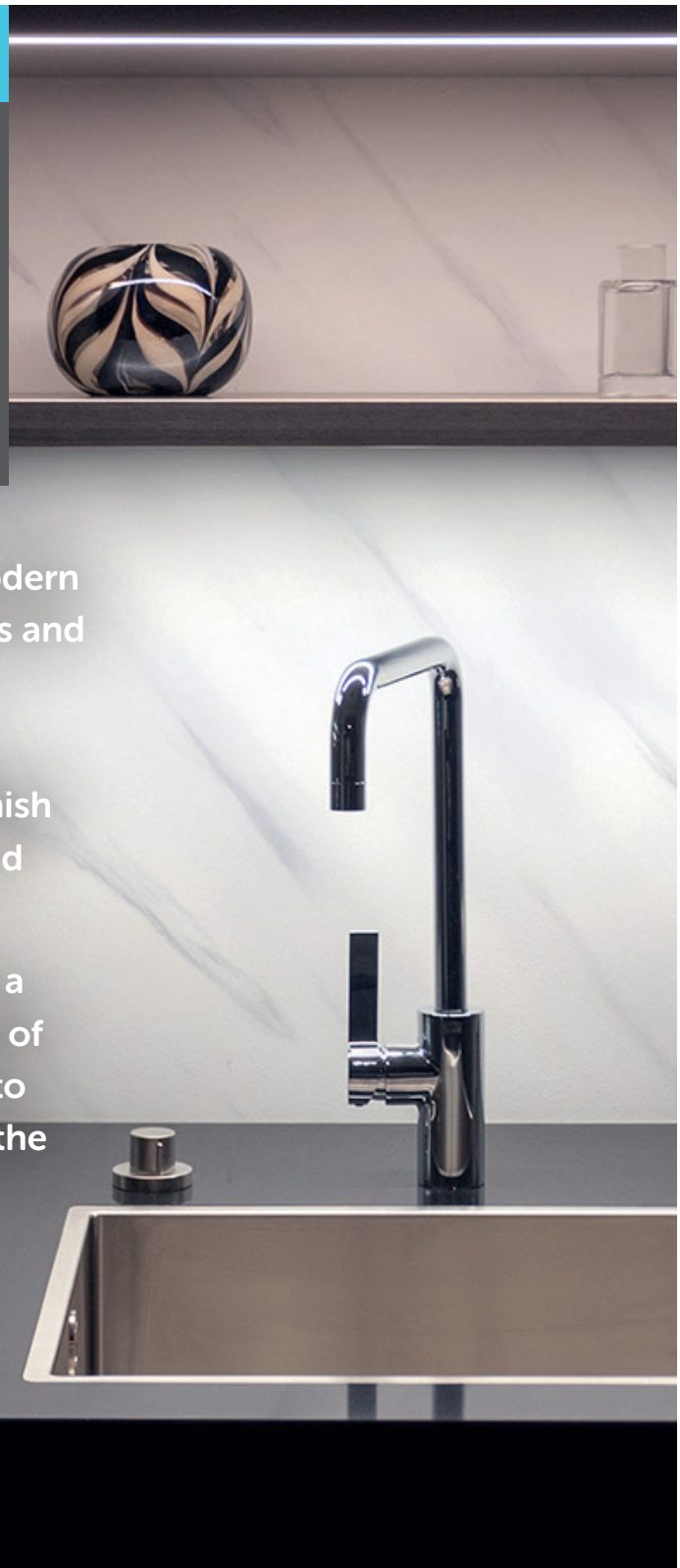
# Poseidon Solid Panel Range

(2400 x 1200 x 4mm)

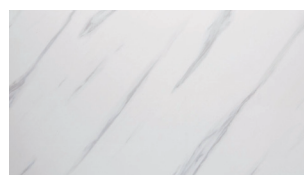
Our Poseidon 1200 is a strong modern alternative for kitchen splashbacks and shower and wet room walls.

Its solid 4mm PVC construction provides both the strength and finish to make it perfect for domestic and commercial applications alike.

Panels can be butted together for a smooth closed finish or our range of chrome accessories are available to create a classic joint to complete the look.



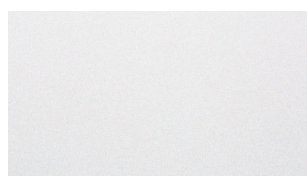
White Sparkle



Grey Marble



Ivory Onyx



White Shimmer



Silver Shimmer



Matt Carrara Marble



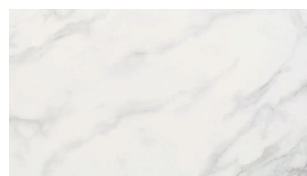
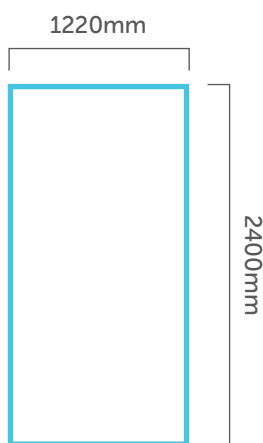
# Hardex Solid Wall Panelling

(2400 x 1220 x 9mm)

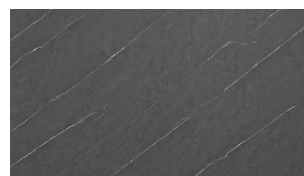


The Hardex range uses 100% Wood Plastic Composite (WPC) to satisfy the needs of customers who require a hard wearing, ultra durable solution that's as stylish as it is tough.

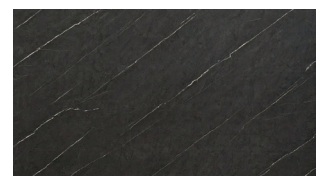
Supplied with a flush square edge style fitting and consisting of 8 colours, this range is ideal for not just the home but also commercial use, such as restaurants, pubs, offices, caravan parks, youth clubs and public restrooms due to its solid construction.



White Marble



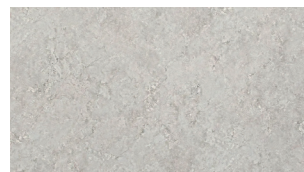
Pietra Grey



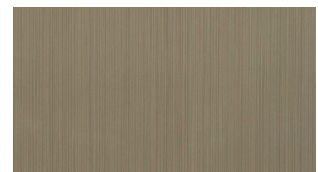
Pietra Black



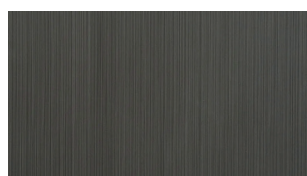
Midnight Grey



Quartz Grey



Bamboo



Vintage



Midnight Blue



SOLID WALL PANELLING

# Kerradeco Range

(1350 x 295 x 9mm) Pack of 8

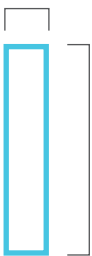
"Super impressed with the service and products received. Highly Recommended. Thanks again."

The Kerradeco range is a stunning range of wall panels that brings something different and unique to your home. Both the colours and texture are inspired by natural materials. These heavy duty panels have a higher resistance to impact and make a great choice for commercial premises.

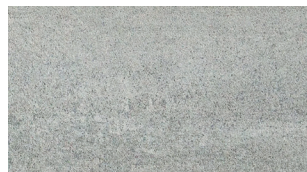




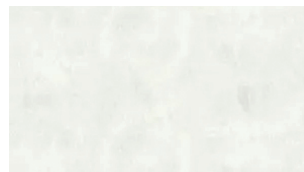
295mm



1350mm



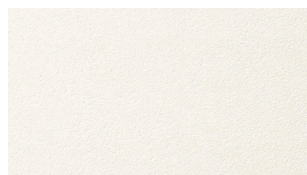
Stone Moon



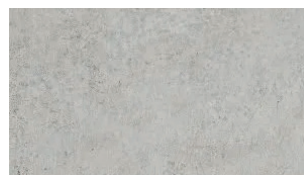
Stone Misty



Stone Anthracite



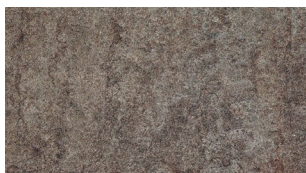
Stone Ivory



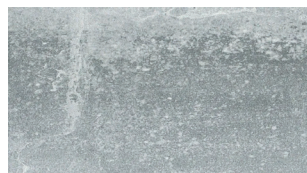
Stone Grey



Desert Stone



Loft Rusty



Loft Concrete



Concrete



Wood Vintage



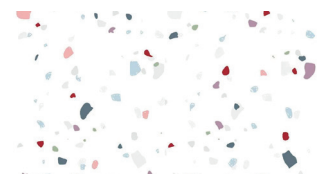
Wood Snowy



Blue Tartan



Wood Carbon

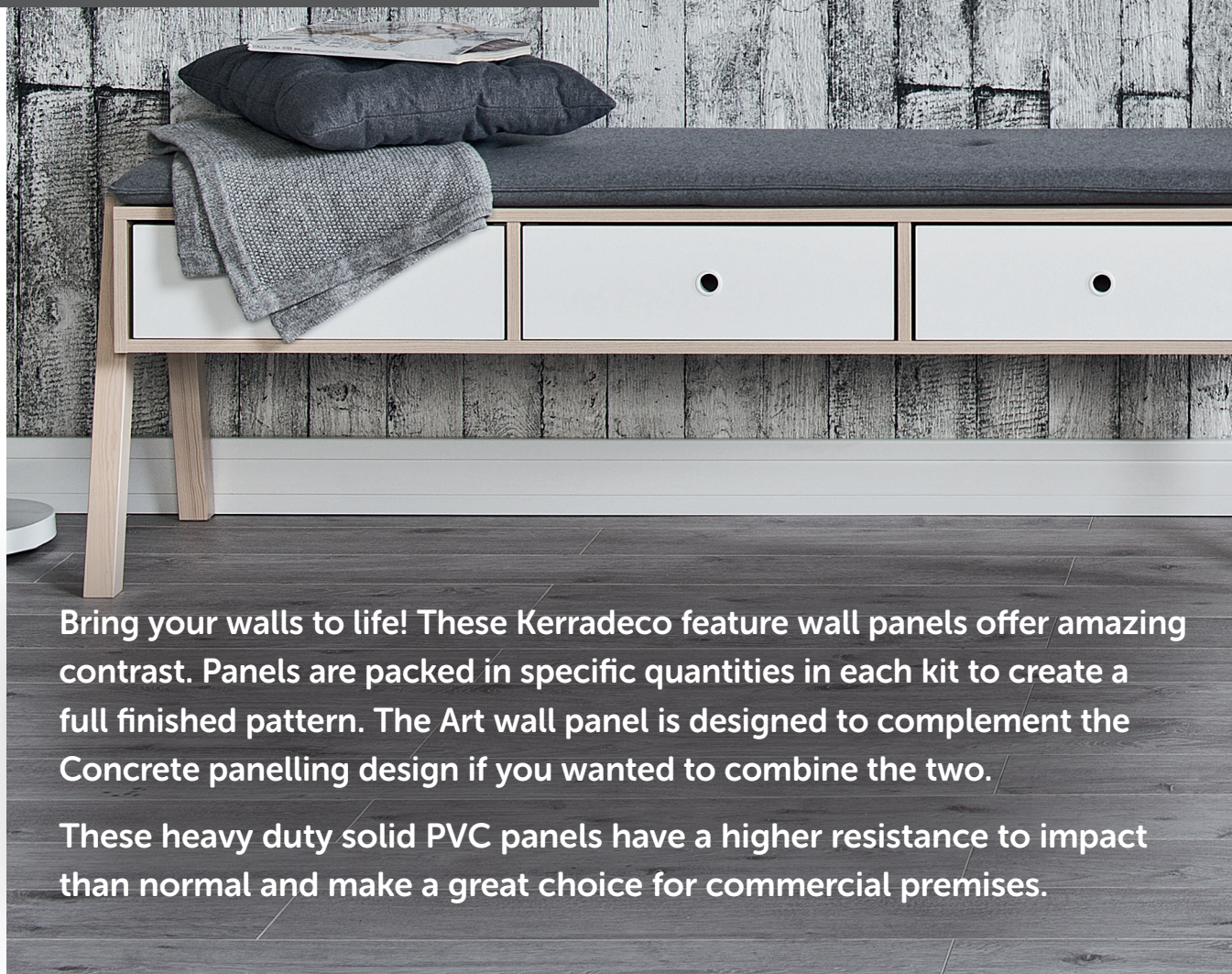


Terrazzo



# Kerradeco Range

(2700 x 295 x 9mm)



Bring your walls to life! These Kerradeco feature wall panels offer amazing contrast. Panels are packed in specific quantities in each kit to create a full finished pattern. The Art wall panel is designed to complement the Concrete panelling design if you wanted to combine the two.

These heavy duty solid PVC panels have a higher resistance to impact than normal and make a great choice for commercial premises.

295mm



2700mm



Concrete



Art Kit



# Vilo Solid Tile SPC

Available in 2 sizes

(600 x 300 x 4mm) Pack of 13

(1200 x 600 x 4mm) Pack of 4

Beautiful and unique, the Vilo Solid Tiles are durable, long-lasting and easy to install. These waterproof wall panels are manufactured using SPC (Stone Polymer Composite) technology.

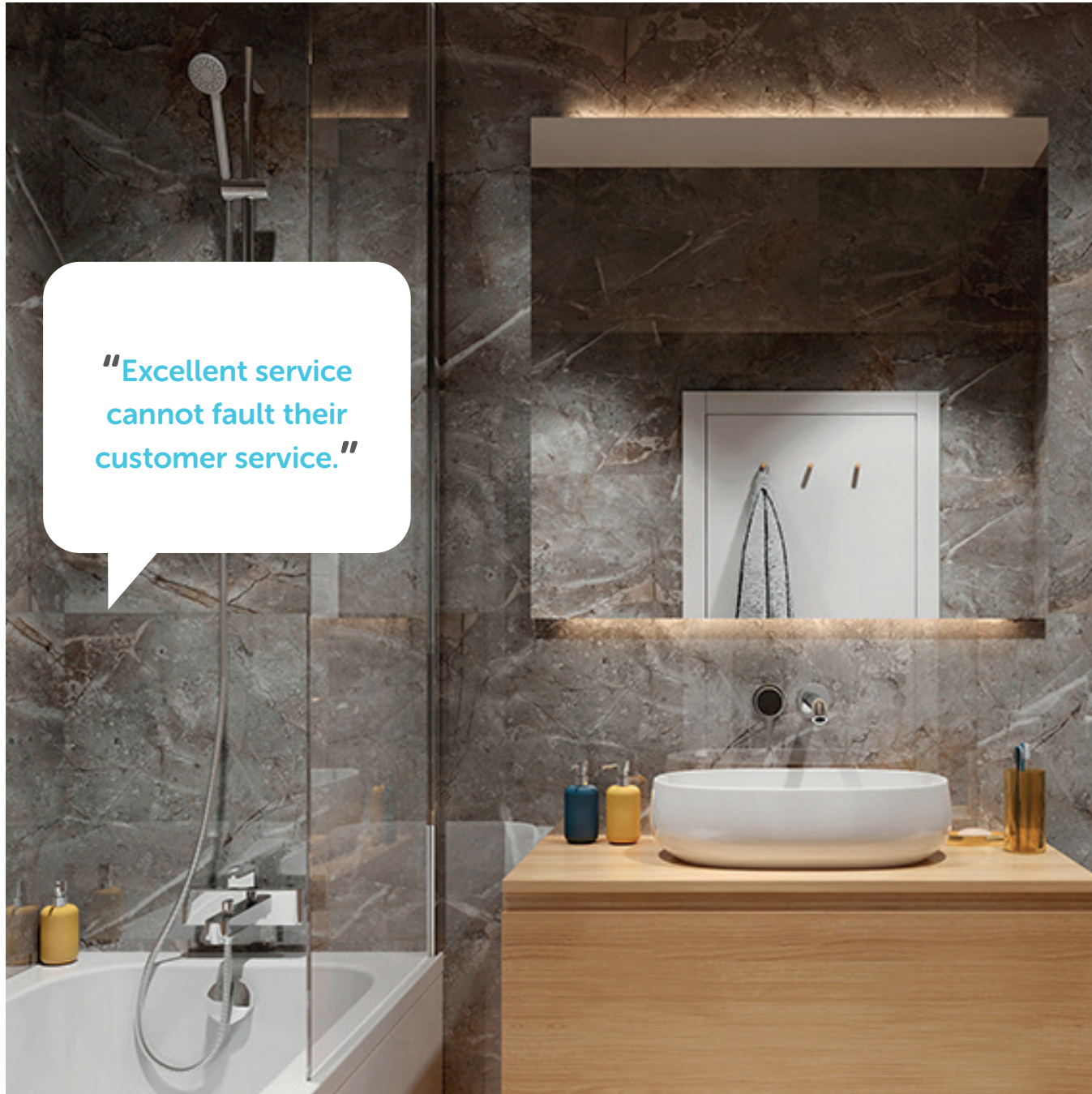
They are based on a high impact resistance hard composite core, which in turn has been coated with a decorative layer, and protected with a UV-resistant coating. This gives the panel a high resistance to scratches and damage.

Thanks to the click design, the installation of the panels is simple and intuitive, and the joints are very subtle and do not require grouting.





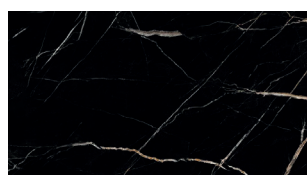
**"Excellent service  
cannot fault their  
customer service."**



300mm



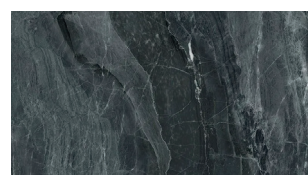
600mm



Calacatta Black



Calacatta White



Dark Stone

600mm



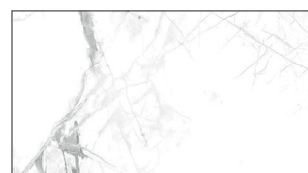
1200mm



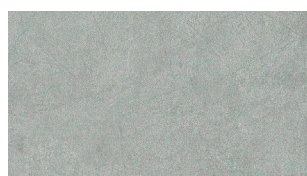
Marble Skin



Ash Grey



Calacatta Snow



Concrete Light



# SLAT WALL PANELLING

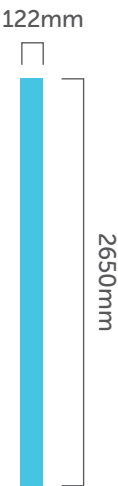
Our slat wall panels imitate timber slat panelling perfectly and are available in a range of sizes and a range of colours. Slat wall panels are easy to install and are complimented with matching left hand and right hand trims and U trims to finish the look. They are lightweight, durable and easy to clean. This means they can be installed in more demanding areas such as the hallway, work area, or kitchen. These panels are waterproof, but not watertight. This type of slat panelling can be installed in interiors with increased humidity (such as a bathroom), on condition they don't have direct contact with water.



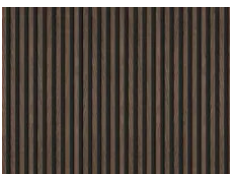
# Linerio Slat Wall Panels

(2650 x 122 x 12mm)

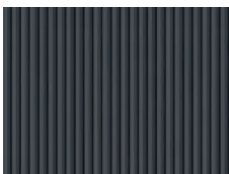
Our linerio slat wall panels offer a touch of modern elegance as well as an affordable and practical solution for those looking for a sleek wood-like effect. These contemporary panels are available in a range of stylish colours and finishes and a range of three sizes outlined below.



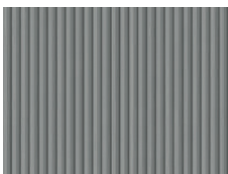
## S-line (2650 x 122 x 12mm)



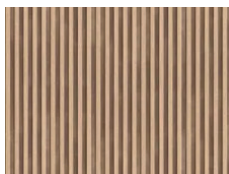
Mocca



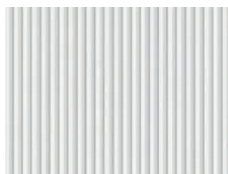
Black



Grey

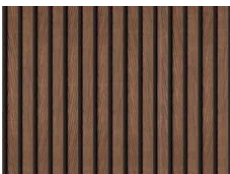


Natural



White

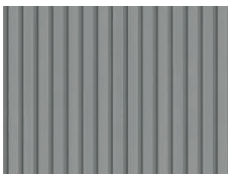
## M-line (2650 x 122 x 12mm)



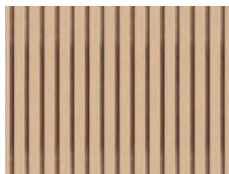
Mocca



Black



Grey

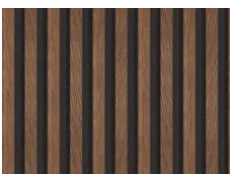


Natural



White

## L-line (2650 x 122 x 12mm)



Mocca



Black



Grey



Natural



White



# Thermo Slat Wall Panels

(2600 x 200 x 16mm)

Designed with the stunning visuals of a conventional slat panel and the functionality of a thermally insulated wall panel.

Not only do these panels offer a beautiful visual appearance inside, they also are a fantastic addition to any garden room to make use of your functional outdoor living space all year long.

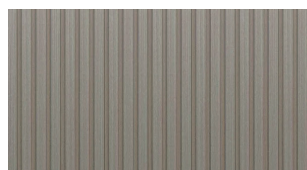
Each of our wall slats are designed with a cavity in the back to offer thermal air pockets to help retain heat during the cold months and help keep the room cool in the summer.



200mm



2600mm



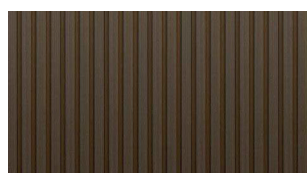
Ash Grey



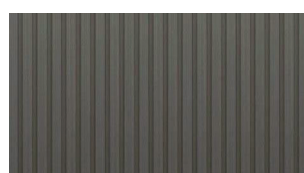
Charcoal Grey



Charcoal White



Hickory Brown



Smokey Grey



# FLOORING

Clever Click is designed to provide all the stunning detail and outstanding natural beauty of conventional wood and stone floors – but at an affordable price.

"I dealt with Haley who was very helpful and down to earth. Highly recommend giving this company a try."

Simple yet stylish patterns, that capture the natural elegance of stone and wood, create a feeling of tranquillity in a room.

Inspired designs, combined with the practical advantages of wear-resistant vinyl, create floors that function effectively in any room or environment.

Choose from the Clever Click Plus and Clever Click ranges – contemporary and classic designs that ensure you'll always find something to match your style.

- Gives any space a warm atmosphere
- Adaptable to interior styles
- Makes any space bigger and brighter
- Natural palette so doesn't date quickly
- Dirt-repellent and low maintenance.
- Ideal for renovations





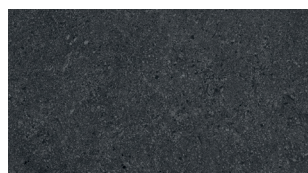
# Flooring Clever Click Plus



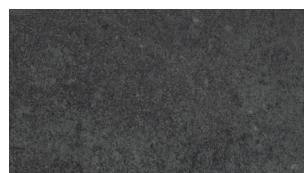
Stone Selection - 655 x 324 x 4.5mm, Coverage: 1.49m<sup>2</sup> per box, Wear layer: PU 0.55mm



Dorato Stone



Orion Jet Stone



Florentine



Monterey Stone

Wood Selection - 1316 x 191 x 4.5mm, Coverage: 1.76m<sup>2</sup> per box, Wear layer: PU 0.55mm



Chesnut Oak



Scarlet Oak



Bear Oak



White Oak



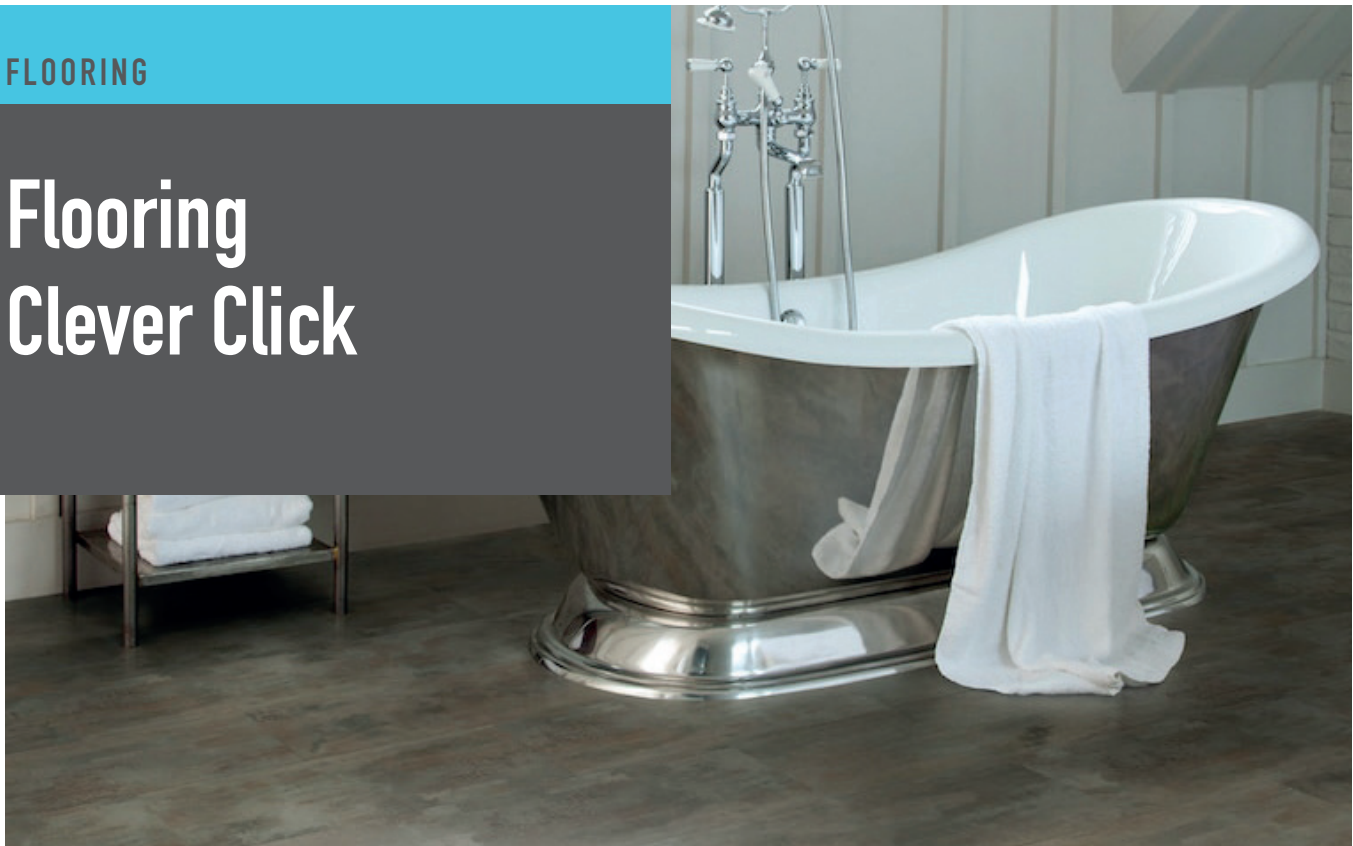
Smoked Oak



Whitewash Pine



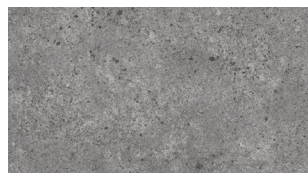
# Flooring Clever Click



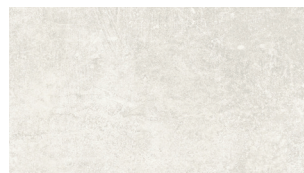
Stone Selection - 655 x 324 x 4.5mm, Coverage: 1.49m<sup>2</sup> per box, Wear layer: PU 0.30mm



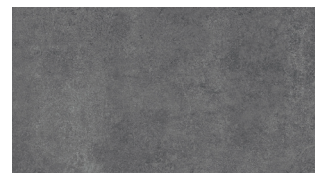
Ventura



Belmont



Galveston Stone



Burlington Stone

Wood Selection - 1316 x 191 x 4.5mm, Coverage: 1.49m<sup>2</sup> per box, Wear layer: PU 0.30mm



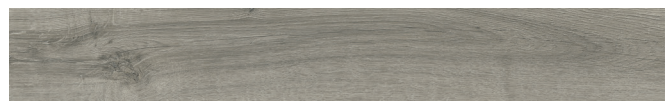
Claremont Oak



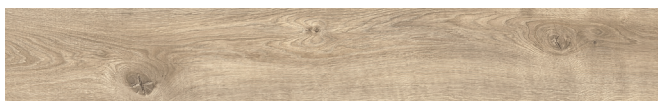
Denver Oak



Hartfood Wood



Huntington Wood



Pontiac Oak



Portland Wood



# Flooring Natural Collection

"Fantastic product,  
3 times cheaper than  
my local retailer.  
Very impressed."

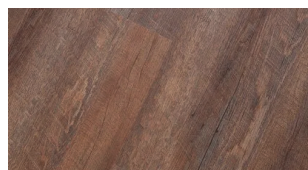
The Natural Flooring Collection features Rigid Core Solid Polymer Composite technology; this range is made up of a composite core construction and is a step up from traditional solid LVT flooring

Featuring a higher filler content and a higher density, the lack of foaming agent used means air bubbles in the core are omitted; this results in a thinner, harder and stiffer plank or tile.

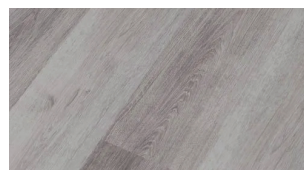
Wood Effect - 1220 x 180 x 5mm, Coverage: 1.76m<sup>2</sup> per box, Wear layer: PU 0.3mm



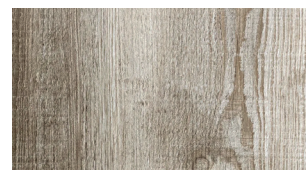
Verona



English Oak



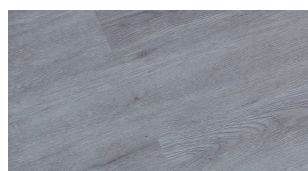
Canadian Oak



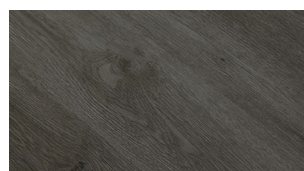
Irish Oak



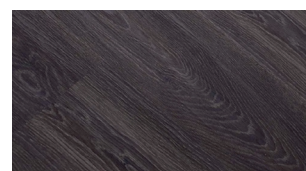
Norwegian Oak



Swedish Oak

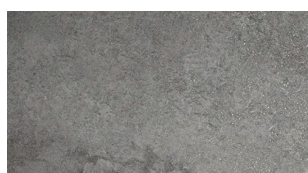


Welsh Oak

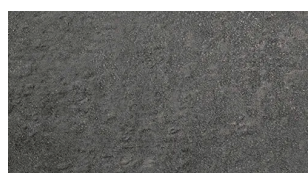


French Oak

Stone Effect - 600 x 300 x 5mm, Coverage: 1.44m<sup>2</sup> per box, Wear layer: PU 0.3mm



Livorno



Florence



Genoa



Milan



# Flooring Wood Effect

(1219 x 178 x 5mm) Pack of 12

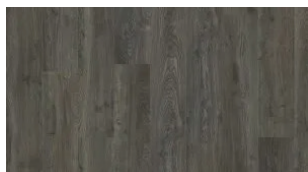
Coverage: 2.61m<sup>2</sup>

Wear layer: 0.3mm

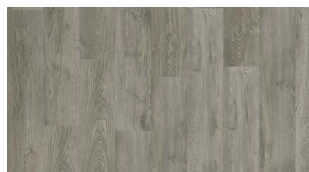
"Brilliant quality, fast delivery, thank you."



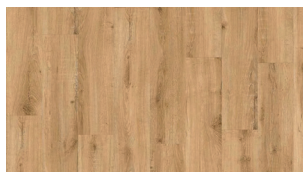
Solida flooring offers a fantastic visual finish with wood effect planks in six colour options and four stone effect tiles that are designed with a refined 4-sided bevel and a uniclic fitting system to make installation fast and easy.



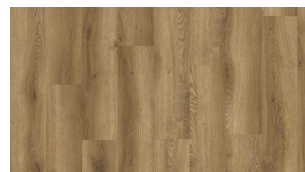
American Oak - Dark



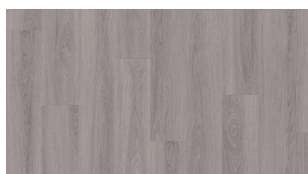
American Oak - Light



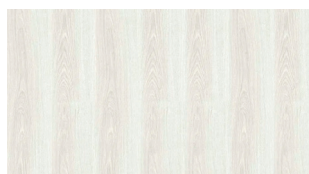
European Oak



Traditional Oak



Riviera Oak - Medium



Riviera Oak - Light



# Flooring Stone Effect

(607 x 303 x 5mm) Pack of 14

Coverage: 2.58m<sup>2</sup>

Wear layer: 0.3mm



The Solida flooring is hard-wearing and durable and has a 0.3mm wear layer, allowing it to withstand the general hustle and bustle in any room throughout a busy family home. A 1mm underlay is also integrated into these 5mm thick panels.



Folkstone - Light



Folkstone - Dark



Magica



Ceramic



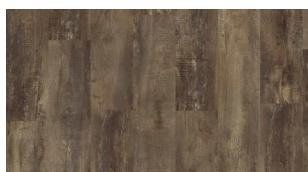
# Layred Flooring Wood Effect

(1494 x 209 x 6mm) Pack of 6  
Coverage: 1.87m<sup>2</sup>

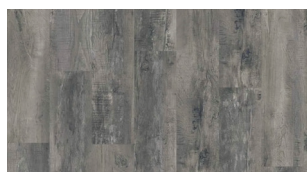


With integrated underlay and easy click method LayRed is Moduleo's strongest engineered vinyl floor and designed to stand its ground in the most extreme conditions. The multi-layered floor with its strong core offers all the advantages of vinyl and adds strength to it plus it is barely 6mm thick.

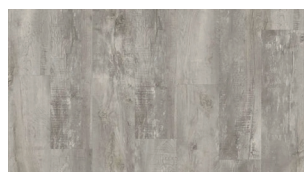
LayRed floors can be installed quickly and easily over an existing or uneven floor without removing or levelling first, making it an ideal solution for any renovation project! The tactile surface provides more relief and texture in the planks. The difference between it and a real parquet floor is hardly noticeable.



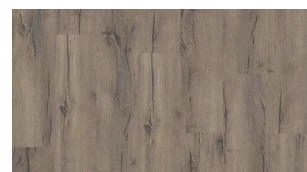
Country Oak - Dark



Country Oak - Medium



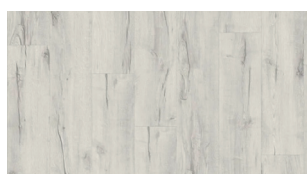
Country Oak - Light



Mountain Oak - Dark



Mountain Oak - Medium



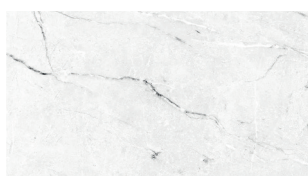
Mountain Oak - Light



# Layred Flooring Stone Effect

(610 x 303 x 6mm) Pack of 10  
Coverage: 1.85m<sup>2</sup>

"Very Friendly and very helpful, good product, at a good price, what more can you ask for."



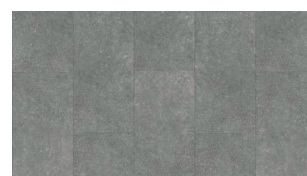
York



Volterra



Cantera - Dark



Cantera - Light



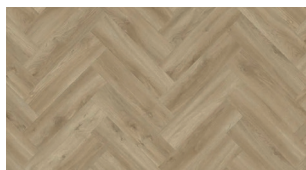
# Moduleo Luxury Herringbone Flooring

(1260 x 630 x 6mm) Pack of 10

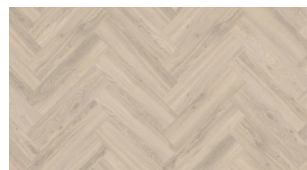
Coverage: 0.8m<sup>2</sup>



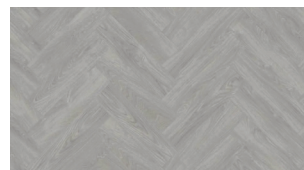
With its ultra-realistic detail, Moduleo LayRed Herringbone is a superb flooring choice. The strong core makes this 6mm thick flooring extra strong and great for renovations and its amazing detail creates a beautiful design.



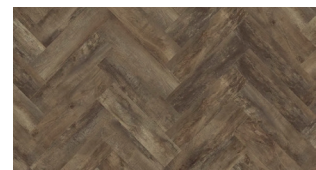
Sierra Oak



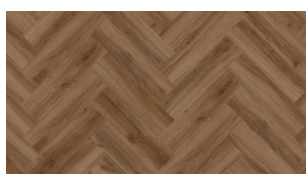
Blackjack Oak



Laurel Oak



Country Oak



Classic Oak



# IT ALL STARTS WITH A SOLID FOUNDATION...

"Lovely people who  
know their product  
and look after their  
customers."



## Xtrafloor Power

Made of up to 90% natural raw materials, our Power standard underlay is 100% recyclable. Power boasts excellent thermal conductivity, making it the perfect choice for rooms with underfloor heating or cooling.

This elastic underlay smooths out small subfloor irregularities; 1 metre wide x 10 metres long x 1.55mm thick. Its lightly tackified surface prevents LVT movement, allowing for an easier installation of your vinyl floor. The protective film captures all dust particles, making it possible to install the underlay while carrying out other work in the room.



## Xtrafloor GO

Is noise affecting your living comfort? Or are you trying to meet the current building regulations? Acoustic underlay is just what you need. Perfect for upper floors or flats in multi-storey buildings, GO blocks different types of noise, from footfall to vibrations.

Extensively tested and officially certified, this sound-damping underlay shows outstanding impact sound reduction values of  $L_w=19dB$ .

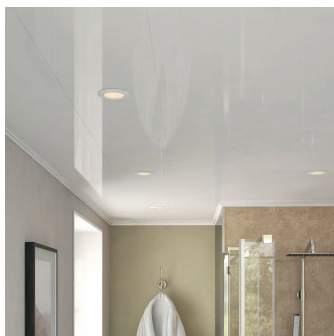
A remarkable performance backed by official certificates. Enjoy the peace and quiet with Xtrafloor GO. Suited for under floor heating and cooling, the extruded closed-cell polyolefin foam material increases your floor's thermal insulation. Roll size: 980mm wide x 15.3 metres long x 1mm thick.



# PVC CEILING PANELS

Our range of ceiling panels can be used in any room of your home, from your kitchen or bathroom, shower, wet room to bedrooms and playrooms. As well as a fantastic look, our PVC cladding panels are an easy to fit, functional and low maintenance alternative to painted ceilings or walls. Because of their tongue and groove interlocking system, our cladding panels are quick and easy to install, creating an attractive finish at a great price. These panels are ideal for ceilings and walls alike, an ideal alternative to tiling.





### White Gloss

- Pack of 4

2600 x 250 x 7.5mm

3000 x 250 x 7.5mm

4000 x 250 x 7.5mm

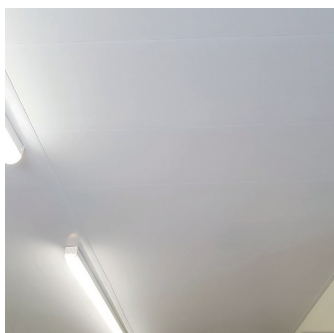


### Moderna White and Silver

- Pack of 5

2600 x 200 x 7.5mm

4000 x 200 x 7.5mm



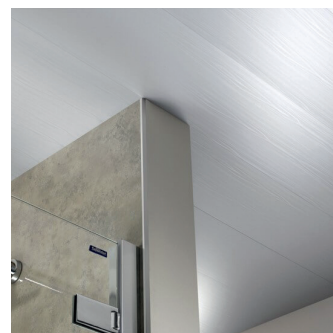
### White Matt

- Pack of 4

2600 x 250 x 7.5mm

3000 x 250 x 7.5mm

4000 x 250 x 7.5mm

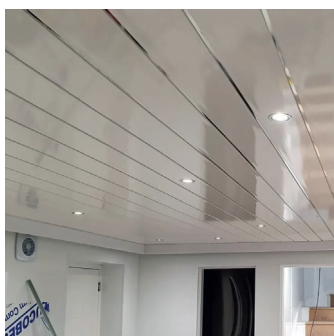


### White Ash

- Pack of 4

2600 x 250 x 7.5mm

4000 x 250 x 7.5mm

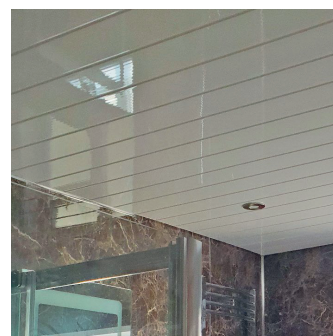


### White Chrome

- Pack of 4

2600 x 250 x 7.5mm

4000 x 250 x 7.5mm



### White Ceiling Clad

- Pack of 4

2600 x 250 x 7.5mm

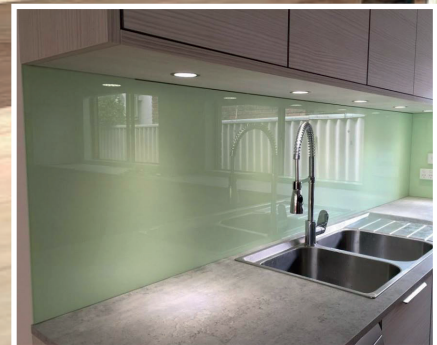
4000 x 250 x 7.5mm



# Hygienic Wall Cladding Sheets

Our ROCKWALL hygienic wall cladding sheets are backed by specialists with over 30 years of experience and comply with all food, hygiene and fire regulations. They provide excellent impact resistance and are a very popular product in commercial kitchens, restaurants, hotels, hospitals, supermarkets and shops. They are available in a range of sizes, thicknesses and colours.

"Brilliant service.  
Very knowledgeable  
and I will definitely  
be using HPS again,  
and highly recommend  
it to everyone."









Our ROCKWALL brand provides everything you need to finish the job to the strictest standards. Our PVC matching coloured trims and recommended high grade polymer adhesive simplifies your installation and ensures a good quality, professional finish.

Want a simple, cost effective alternative to tiling? Our ROCKWALL hygienic wall cladding sheets are also perfect for kitchen splash backs and showers. They can be installed directly over existing surfaces and seamless joints mean no more grouting. All sheets are backed with a 20 year guarantee meaning they are guaranteed to last for years to come.



					
White Satin	White Gloss	Black	Dark Grey	Stainless Steel	Pastel Grey
					
Dolphin Grey	Pastel Blue	Pastel Cream	Pastel Green	Green Grape	Avocado
					
Racing Green	Lime Green	Jade	Peacock	Ocean Blue	Marine Blue
					
Sky Blue	Sandstone	Yellow	Orange	Dark Pink	Red
					
Plum					



# FITTINGS AND ACCESSORIES

Our job wouldn't be complete if we didn't provide everything you needed for the job. Browse our range of PVC and aluminium trims, ideal for finishing off your wall panel and ceiling installation. External & internal corners, H joining trims, end caps and quadrant - available in silver, white, black & cream and easy to cut to length.

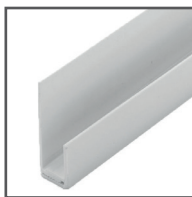
## White - 8mm & 10mm



1 Part Edge Trim  
White  
7/8mm x 2.7m



1 Part Edge Trim  
White  
10mm x 2.7m



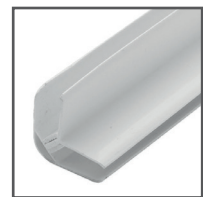
2 Part Edge Trim  
White  
8/10mm x 2.7m



Internal Corner Trim  
White  
8mm x 2.7m



Internal Corner Trim  
White  
10mm x 2.7m



2 Part Universal Corner  
White  
8/10mm x 2.7m



2 Part Wall Ceiling  
Cove White  
8mm x 2.7m



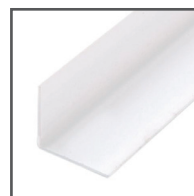
2 Part Wall Ceiling  
Cove White  
10mm x 2.7m



2 Part Wall Ceiling  
Cove White/Chrome  
8mm x 2.7m



2 Part Wall Ceiling  
Cove White/Chrome  
10mm x 2.7m



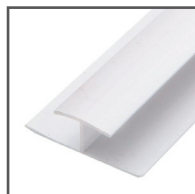
Right Angle White  
15mm x 2.7m



Right Angle White  
25mm x 2.7m



H Trim  
White  
8mm x 2.7m



H Trim  
White  
10mm x 2.7m



Quadrant White  
8/10mm x 2.7m



Floor/Wall Joint Trim  
White  
4/10mm x 2.5m

## Chrome - 8mm & 10mm



1 Part Edge Trim  
Chrome  
7/8mm x 2.7m



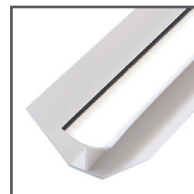
1 Part Edge Trim  
Chrome  
10mm x 2.7m



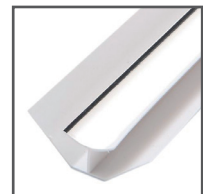
2 Part Edge Trim  
Chrome  
8/10mm x 2.7m



1 Part External Corner  
Chrome  
8mm x 2.7m



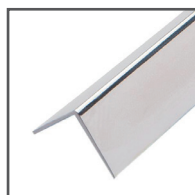
Internal Corner Trim  
Chrome  
8mm x 2.7m



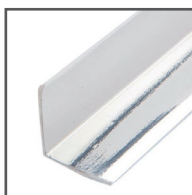
Internal Corner Trim  
Corner  
10mm x 2.7m



Right Angle Chrome  
15mm x 2.7m



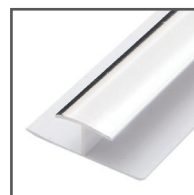
Right Angle Chrome  
25mm x 2.7m



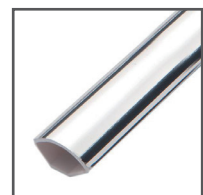
Right Angle Internal  
Chrome  
28mm x 2.7m



H Trim Chrome  
8mm x 2.7m

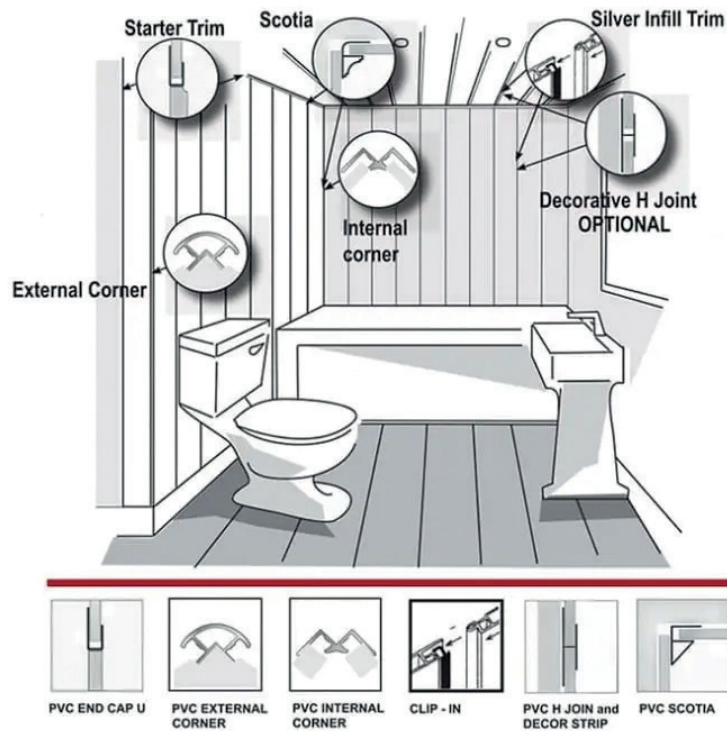


H Trim Chrome  
10mm x 2.7m



Quadrant Chrome  
8/10mm x 2.7m





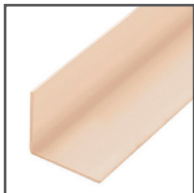
## Cream



2 Part Edge Trim  
Cream  
8/10mm x 2.7m



2 Part Universal Corner  
Cream  
8/10mm x 2.7m



Right Angle Cream  
25mm x 2.7m

## Black



2 Part Edge Trim  
Black  
8/10mm x 2.7m



2 Part Universal Corner  
Black  
8/10mm x 2.7m



1 Part External Corner  
Black  
10mm x 2.7m



Right Angle  
Black  
25mm x 2.7m

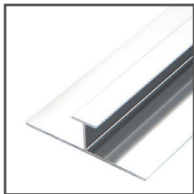


Black Internal  
7.5mm x 2.7m

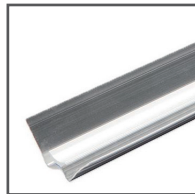


Black Internal  
10mm x 2.7m

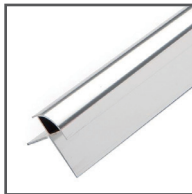
## Aluminium - 4mm & 10mm



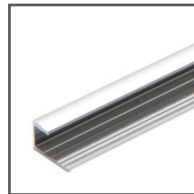
Inline Joint  
Chrome  
4mm x 2.4m



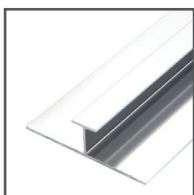
Poseidon Internal  
Corner Chrome  
4mm x 2.4m



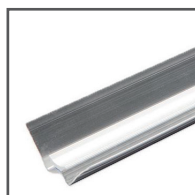
Poseidon External  
Corner Chrome  
4mm x 2.4m



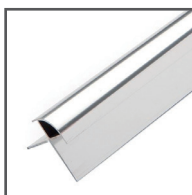
Poseidon Edge Trim  
Chrome  
4mm x 2.4m



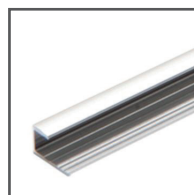
Shower Panel H Joint  
Bright Silver  
10mm x 2.7m



Shower Panel Internal  
Corner Bright Silver  
10mm x 2.7m



Shower Panel External  
Corner Bright Silver  
10mm x 2.7m



Shower Edge Trim  
Bright Silver  
10mm x 2.7m



# SKIRTING AND ARCHITRAVE

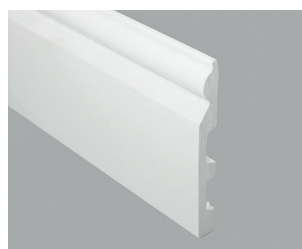
Our rigid styrene skirting boards and architraves are the ultimate no-hassle, no-maintenance, easy-fit and cost-effective way to add the essential finishing touches to any room. With this high-quality solution, you can forget all of that time-consuming sanding and messy painting. They combine the tough, hard-wearing, wipe-clean benefits of plastic with all the aesthetics of traditional skirting boards and architraves.



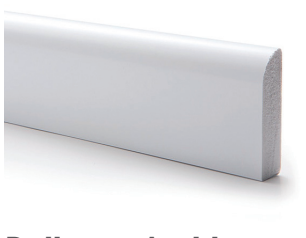
**Bullnose Skirting**  
2900 x 100 x 13mm



**Ogree Skirting**  
2920 x 100 x 14mm



**Torus Skirting**  
2920 x 140 x 17mm



**Bullnose Architrave**  
2200 x 55 x 15mm



**Ogree Architrave**  
2200 x 55 x 14mm



**Torus Architrave**  
2200 x 55 x 19mm



**Window Board**  
5000 x 200mm



**Window Board**  
5000 x 225mm



**Window Board**  
5000 x 250mm

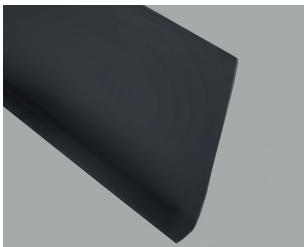


# FLEXIBLE SKIRTING

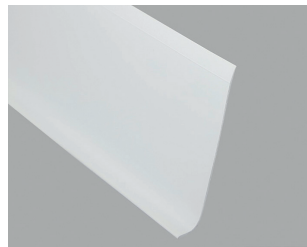
2000 x 100 x 2mm

Flexible sit-on skirting offer an easy to fit option to cover the junction between wall and floor. They are installed on top of the floor covering and are hard-wearing. They need little maintenance other than regular cleaning. Generally, sit-on skirtings are used with hard floorcoverings such as vinyl and lino.

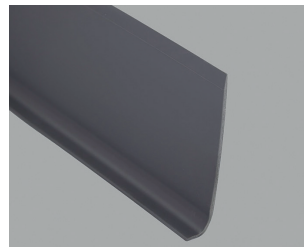
Available in a range of colours which you can find below:



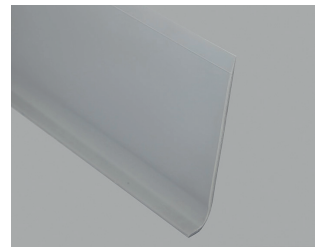
Black



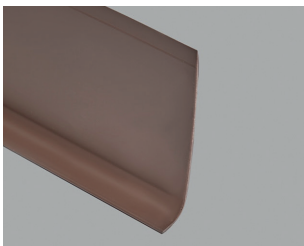
White



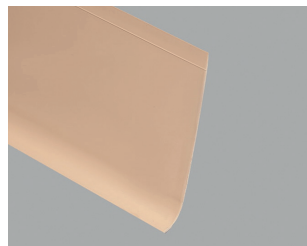
Dark Grey



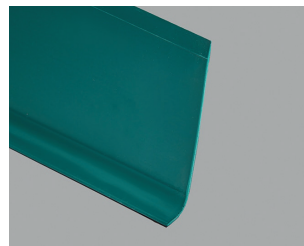
Light Grey



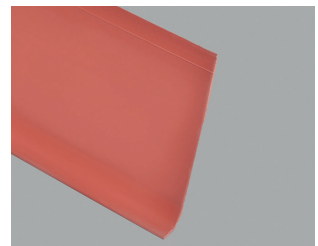
Brown



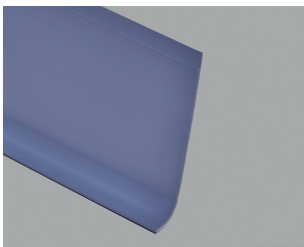
Salmon



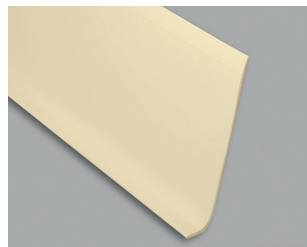
Evergreen



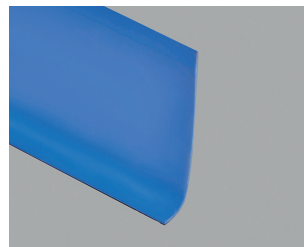
Hickory Red



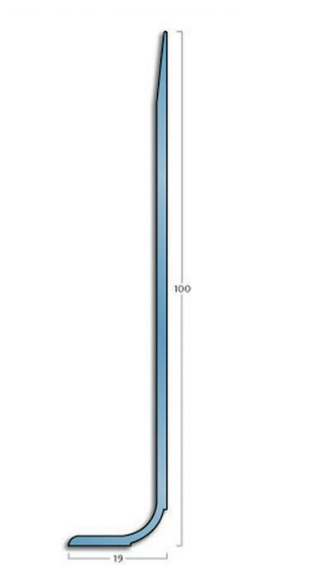
Bluebell



Dune



Azure Blue





# ADHESIVES & SEALANTS

Our premium adhesives and sanitary grade sealants can be used on a multitude of surfaces including plywood, breeze block, ceramics, stone, timber, metal and plasterboard. All our products have superior bonding strength (even on moist surfaces), are odourless, remain elastic after curing and the MS polymer technology allows for expansion through temperature variations.



**Soudall Fixall Polymer Adhesive** - 290ml



**Alpha Grip Grab Adhesive** - 350ml



**White Sanitary Silicone** - 290ml



**Clear Sanitary Silicone** - 290ml



**Pastel Cream Sanitary Silicone** - 290ml



**Pastel Grey Sanitary Silicone** - 290ml



**Black Sanitary Silicone** - 290ml



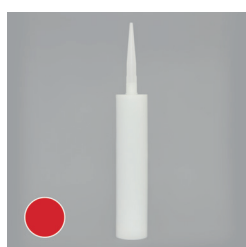
**Dark Grey Sanitary Silicone** - 290ml



**Dolphin Grey Sanitary Silicone** - 290ml



**Orange Sanitary Silicone** - 290ml



**Red Sanitary Silicone** - 290ml



**Plum Sanitary Silicone** - 290ml



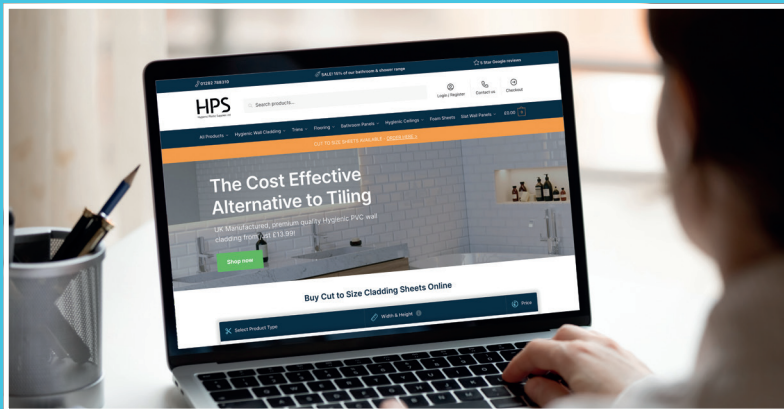
**Pastel Blue Sanitary Silicone** - 290ml



**Peacock Sanitary Silicone** - 290ml



# ONLINE ■ SHOWROOM ■ IN STORES



## Shop and order online

Our PVC based products and flooring offer the best quality on the market. Don't settle for subpar cladding, it won't last! Discover our huge range online at [www.hygienicplastic.co.uk](http://www.hygienicplastic.co.uk)

All our products are backed with a 20 year guarantee and we offer nationwide shipping. We can guarantee the best prices beyond any competitor



## Visit us at our Showroom

Ready to see the quality for yourself? Come and visit our Padiham showroom.

We've got all the free samples you could need and friendly staff to help you out

Your home transformation awaits



**Winchester Works, Grove Lane, Padiham, Lancashire BB12 8DP.**





**01282 788310**  
[info@hygienicplastic.co.uk](mailto:info@hygienicplastic.co.uk)  
[www.hygienicplastic.co.uk](http://www.hygienicplastic.co.uk)

