



**The UK's leading
PVC hygienic wall
cladding brand**





About RockWall...

RockWall is a leading brand in the hygienic wall cladding market and is recognized globally for its innovative and high-quality solutions tailored for environments that require strict hygiene control. With over 30 years of expertise, RockWall specialises in producing durable, easy-to-maintain wall cladding systems that are trusted across industries like healthcare, food processing, hospitality, and education.

RockWall is a flagship product known for its smooth, impervious surface, which is ideal for maintaining cleanliness in hygiene-sensitive areas. Made from high-grade, solid PVC, it provides a tough, impact-resistant surface that withstands daily wear, making it suitable for demanding environments such as hospitals and commercial kitchens. The material is resistant to moisture, bacteria, and chemicals, allowing for easy cleaning and reducing the risk of contamination.



Why use RockWall?

The penalties for non compliance of hygiene are becoming ever more stringent across a wide variety of industries.

Choosing the right product for your business has never been more important. All our products:

- Come with a 20 year guarantee
- Backed by specialists with over 30 years of experience
- Comply with all food, hygiene, fire and building regulations
- Available in a range of over 28 different colours and finishes with matching trims
- UK manufactured
- Easy to install and excellent impact resistance

The RockWall brand provides everything you need to finish the job to the strictest standards. Our PVC trims and recommended high grade polymer adhesive simplifies your installation and ensures a good quality, professional finish.

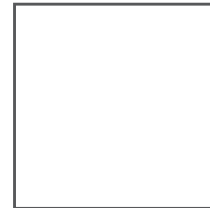
Our trims are available in a variety of lengths and matching colours - speak to your local stockist to find out more.



Our range of colours available



Take a look at our range of solid PVC hygienic wall cladding colours below. Matching PVC trims are available to ensure the perfect finish.



Available from 1mm to 12mm in a range of sizes

White Satin



White High Gloss



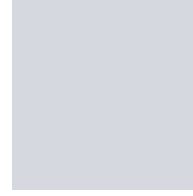
Black



Dark Grey



Pastel Grey



Clay



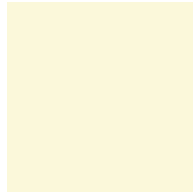
Dolphin Grey



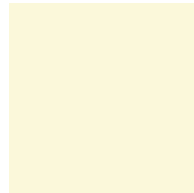
Dove Grey



Sandstone



Linen



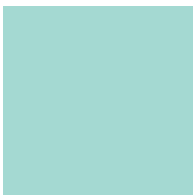
Ivory



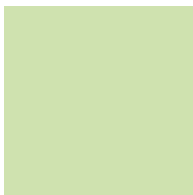
Pastel Cream



Pastel Green



Mint



Green Grape



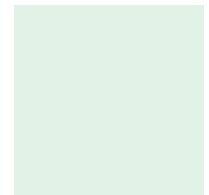
Avocado



Racing Green



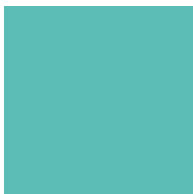
Lime Green



Duck Egg



Pastel Blue



Jade



Peacock



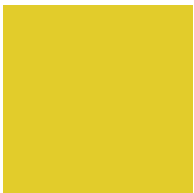
Bluebird



Marine Blue



Lagoon



Yellow



Orange



Pink



Red



Plum

* Other colours available, ask your stockist for more details

Fixtures & Fittings

All our RockWall trims enable our wall cladding sheets to be fixed in place ensuring a professional finish - suitable for all hygienic or watertight areas. They comply with all food, hygiene and fire regulations and are UK manufactured using high-density rigid PVC.



PVC H Section/Joining Strip

A simple one piece H section with a wider back edge allowing mechanical fixing and a watertight fit. These are used to join sheet to sheet vertically and can also be used horizontally to join another material e.g. vinyl flooring.



PVC H Section/Joining Strip - Two Part

A simple two piece H Section. Central trim snaps on to back section to hold panels in place to leave a neat, watertight finish. They are used to join sheet to sheet vertically and can also be used horizontally to join another material e.g. vinyl flooring.



PVC J Section/Edging Strip

A simple but multifunctional profile, this can be used on any final edges or floor and is easy to integrate with corners, flooring and ceilings. A wider back edge allows for mechanical fixing if required.



PVC J Section/Edging Strip - Two Part

This is a two part profile of the PVC J section, it can be used on any final edges or floor and is easy to integrate with corners, flooring and ceilings. A wider back edge allows for mechanical fixing if required and a snap on cover allows for easier fitting.



PVC Small Internal Corner

Used to fit sheet to sheet in any internal corner or bottom coving. The snug watertight trim and curved external profile ensures a great finish and is a fast alternative to thermoforming.



PVC Small External Corner

Used to fit sheet to sheet on any external corner. Easy alignment and tight fit sealed finish.



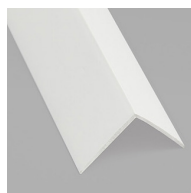
PVC 50mm Internal Angle

Our internal angles are a simple, aesthetically pleasing finish to any internal corner with good coverage for ease of fitting.



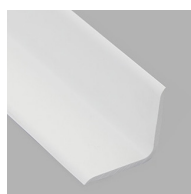
PVC 50mm External Angle

An external angle is a great alternative to thermoforming and provides a durable finish to any external corners/ door frames.



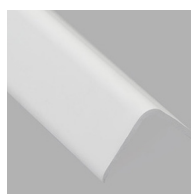
PVC Universal Angle

This angle can be used to finish any internal or external corner.



PVC 30mm Internal Angle

A slightly smaller angle than our 50mm, our 30mm internal angles add another aesthetically pleasing finish to any internal corner.



PVC 30mm External Angle

Our 30mm external angles are another great alternative to thermoforming and provide a durable finish to any external corners or door frames.



PVC 40mm Adjustable Angle

This Adjustable PVC Angle Trim has been designed to provide a neat, tidy and professional finish for both internal and external corners. It is flexible from 0° to 180° for out-of-square walls.

Adhesives & Sealants

Our premium adhesives and sanitary grade sealants can be used on a multitude of surfaces including plywood, breeze block, ceramics, stone, timber, metal and plasterboard. All our products have superior bonding strength (even on moist surfaces), are odourless, remain elastic after curing and the MS polymer technology allows for expansion through temperature variations.



RockWall Hybrid Polymer Adhesive - 300ml

You will need two to three tubes of this per sheet, depending on the size of sheet you are fitting - speak to your local stockist of RockWall to find out more.



Sanitary Silicone - 300ml
Silicone available in the colours below.



Two part Polyurethane Cladding Adhesive 6.5kg

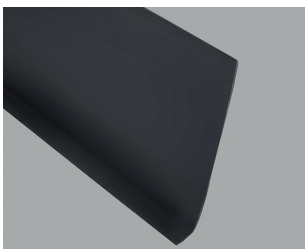
Our two part adhesive is mixed together on site with a paddle to produce a smooth, spreadable product and cures within 30 minutes.

It is applied using a notched trowel and is designed to give 100% coverage to the rear of each sheet ensuring maximum effectiveness whilst adhering to almost any substrate including tiles, plyboard, plasterboard and blockwork.

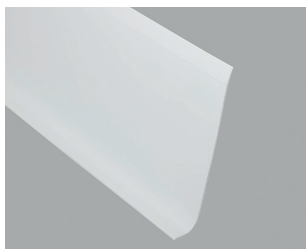
Flexible skirting 2000 x 100 x 2mm

Flexible sit-on skirting offer an easy to fit option to cover the junction between wall and floor. They are installed on top of the floor covering and are hard-wearing. They need little maintenance other than regular cleaning. Generally, sit-on skirtings are used with hard floorcoverings such as vinyl and lino.

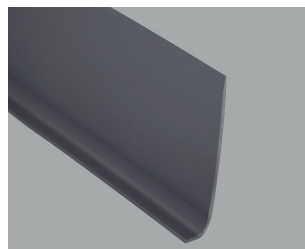
Available in a range of colours which you can find below:



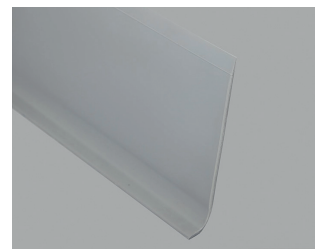
Black



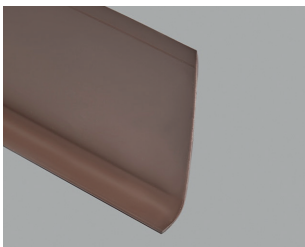
White



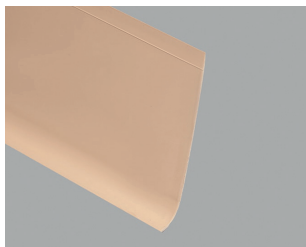
Dark Grey



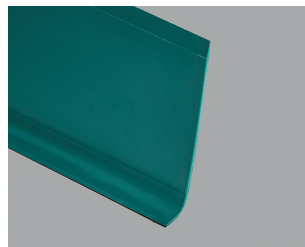
Light Grey



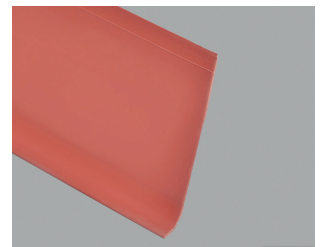
Brown



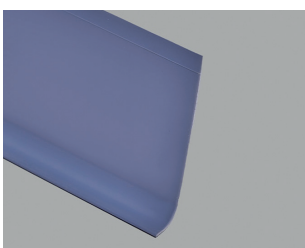
Salmon



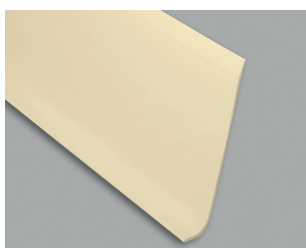
Evergreen



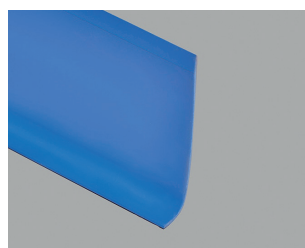
Hickory Red



Bluebell



Dune



Azure Blue

